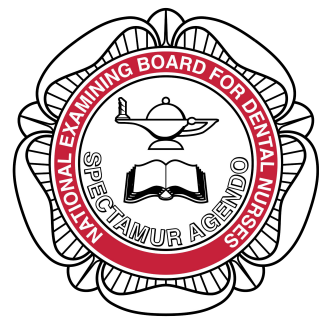


Level 4

Oral Health Education



National
Examining
Board for
Dental Nurses.

0118 207 8696
learn@cavitytraining.co.uk

About the course

The Certificate in Oral Health Education is a level 4 post-registration qualification awarded by the National Examining Board for Dental Nurses (NEEDN). This course is designed to provide Dental Nurses with the educational experience, including the knowledge, critical understanding, intellectual skills, practical skills, and personal attitude to enable them to provide effective oral health education for dental patients.

Awarding body: National Examining Board for Dental Nurses (NEEDN)

Academic level: Level 4 Certificate

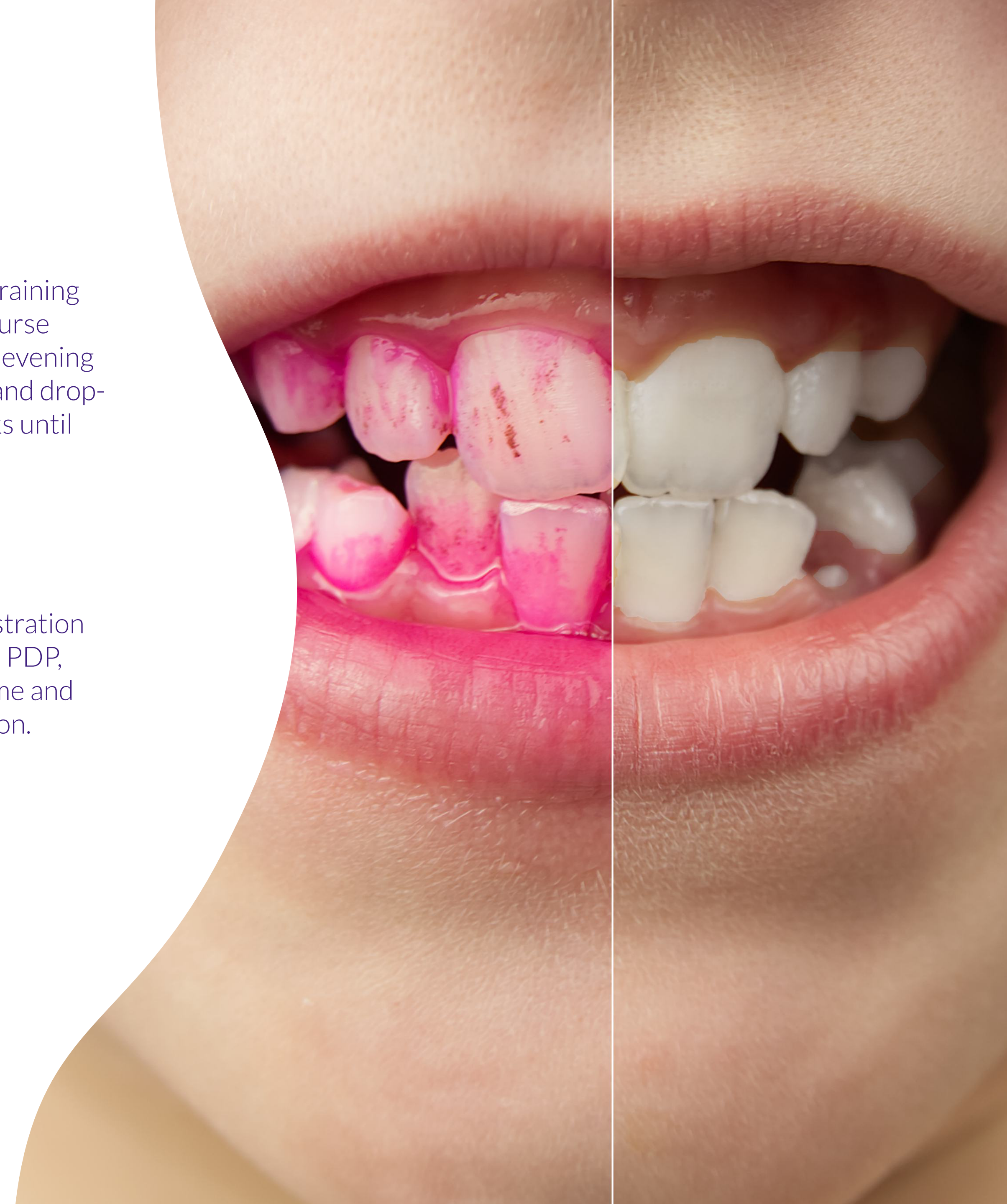
Duration: 9 months

Study method

Our Course is delivered via live training webinars with specialist dental nurse tutors. Lessons are for 2 hours 1 evening per week for the first 4 months, and drop-in support sessions every 2 weeks until ROC completion.

Learner Eligibility

Qualified Dental Nurse, GDC Registration, 6 months post registration experience, Up-to-date CPD and PDP, Workplace Mentor, Adequate time and patient access for ROC completion.



How is the course delivered?

Similar to the classroom activities that your tutor designs to develop and support learning, we have included guided learning tasks to increase our students' understanding and knowledge.

The online learning experience provided by Cavity Training of Dental Nursing includes a combination of materials and learning resources to guide and support students as independent online learners. These include:

- Live Training Webinars
- Exclusive, unique animations
- Suggested reading materials
- Key documents
- Guided learning tasks
- Progress assessments

All these learning resources are available for our students to study at the times that best suits them as supported independent learners.

How to study this course

This course is designed to provide students with the knowledge and understanding of Oral Health Education which will allow them to competently deliver oral health education to patients and succeed in the exam.

The course takes place over nine months of guided learning requiring approximately 6 hours of study per week, followed by completion of a Record of Competence.

Each class is accompanied by a study guide, which is designed to help students navigate their learning and carry out a variety of guided learning tasks.



Qualification Details

Record of competence

To achieve a certificate in Oral Health Education, students are required to complete a work-based Record of Competence (ROC). There are three sections to the ROC:

1. Practical Competence Assessment Sheets (PAS). The Assessment of seven patients, four of whom should each be seen twice.
2. Case Study
3. Supplementary outcomes

Examination

90-minute written examination composed of two sections:

Part A – 45 multiple choice questions (MCQ)

Part B – 30 extended matching questions (EMT)

Examinations are held twice a year in March and September.

Award of qualification

In order to be awarded this qualification, you must: Complete and satisfy the requirements of the ROC and successfully pass the examination.

How to apply

In order to secure a place on the course and start learning you need to take the following steps:

Sign up Online
Provide the necessary documents as specified
Make Payment

